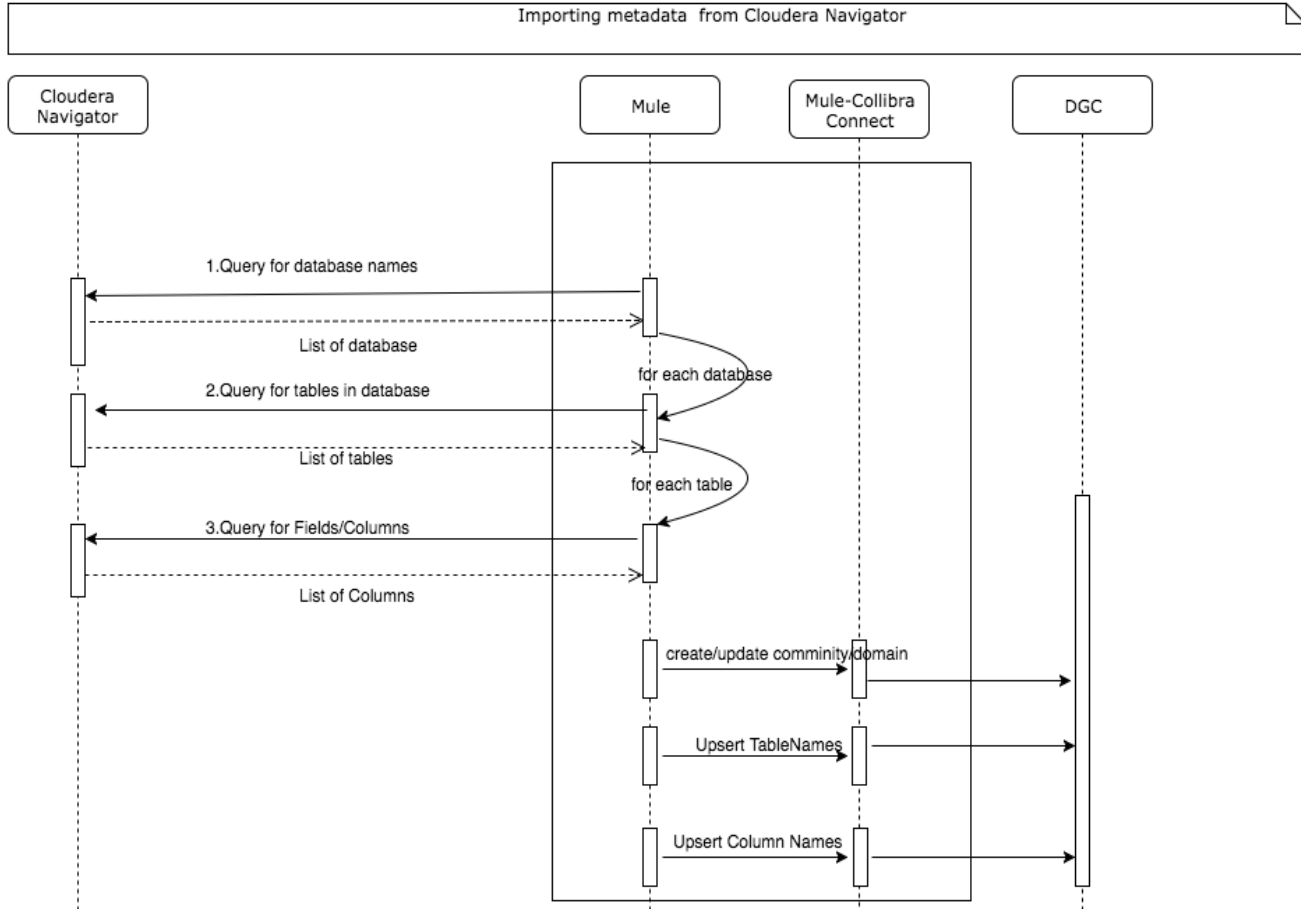


Importing Data from Cloudera Navigator Technical Design

Flow:



Step 1: List all database present in the system

Request:

http://<your-instance>:<port>/api/v3/entities?query=type:database

Authorization: Basic YWRtaW46YWRtaW4=

Response:

```
[
  {
    "identity": "2a1591de8a79d3e022a9b28226f28032",
    "originalName": "testingdatabase",
    "sourceId": "4f3e6518363eae52d239ff4fae31a1d",
    "firstClassParentId": null,
    "parentPath": null,
    "extractorRunId": "4f3e6518363eae52d239ff4fae31a1d##31095",
    "name": null,
    "description": " database for testing purposes and fun ",
    "tags": null,
    "properties": null,
    "filePath": "hdfs://<host>:<prot>/<uri>/stingdatabase.db",
    "params": null,
    "sourceType": "HIVE",
    "deleted": false,
    "type": "DATABASE",
    "internalType": "hv_database"
  },
  {
    "identity": "45f9daff5faad0f82478c29c29c920f",
    "originalName": "default",
    "sourceId": "4f3e6518363eae52d239ff4fae31a1d",
    "firstClassParentId": null,
    "parentPath": null,
    "extractorRunId": "4f3e6518363eae52d239ff4fae31a1d##1",
    "name": null,
    "description": "Default Hive database description coming from DGC.",
    "tags": null,
    "properties": null,
    "filePath": "hdfs://<host>:<prot>/<uri>/stingdatabase.db",
    "params": null,
    "sourceType": "HIVE",
    "deleted": false,
    "type": "DATABASE",
    "internalType": "hv_database"
  }
]
```

Step 2: List all Tables for each database

Request:

http://<your-instance>:<port>/api/v3/entities?query=(type:table)AND(parentPath:"/default")
Authorization: Basic YWRtaW46YWRtaW4=

Response:

```
{
  "identity": "09a37cf16ff893d0317df2958901d646",
  "originalName": "customer",
  "sourceId": "4f3e6518363eae52d239ff4fae31a1d",
  "parentPath": "/default",
  "extractorRunId": "4f3e6518363eae52d239ff4fae31a1d##24097",
  "description": "This is a description of my favorite table from DGC",
  "tags": ["fav"],
  "properties": {"priority": "highest"},
  "created": "2015-06-05T19:42:41.000Z",
  "lastAccessed": "1970-01-01T00:00:00.000Z",
  "filePath": "<path to hdfs>/customer",
  "inputFormat": "org.apache.hadoop.mapred.TextInputFormat",
  "outputFormat": "org.apache.hadoop.hive ql.io.HiveIgnoreKeyTextOutputFormat",
  "serdeLibName": "org.apache.hadoop.hive.serde2.lazy.LazySimpleSerDe",
  "owner": "hue",
  "compressed": false,
  "deleted": false,
  "type": "TABLE",
  "sourceType": "HIVE",
  "internalType": "hv_table"
}, {
  "identity": "f82977f59c814607aaf61e076c11f7a3",
  "originalName": "account",
  "sourceId": "4f3e6518363eae52d239ff4fae31a1d",
  "parentPath": "/default",
  "extractorRunId": "4f3e6518363eae52d239ff4fae31a1d##24096",
  "description": "Customer Account number coming from DGC 5.1",
  "created": "2015-06-05T19:39:22.000Z",
  "lastAccessed": "1970-01-01T00:00:00.000Z",
  "filePath": "<path to hdfs>/account",
  "inputFormat": "org.apache.hadoop.mapred.TextInputFormat",
  "outputFormat": "org.apache.hadoop.hive ql.io.HiveIgnoreKeyTextOutputFormat",
  "serdeLibName": "org.apache.hadoop.hive.serde2.lazy.LazySimpleSerDe",
  "owner": "hue",
  "compressed": false,
  "deleted": false,
  "type": "TABLE",
  "sourceType": "HIVE",
  "internalType": "hv_table"
}
```

Step 3: List all columns in the table

Request:

http://<your-instance>:<port>/api/v3/entities?query=(type:field)
AND(parentPath:"/default/customer")
Authorization: Basic YWRtaW46YWRtaW4=

Response:

```
[
{
  "identity": "a0fe1e6d451f8af69de19edfd7b49ca1",
  "originalName": "cust_id",
  "sourceId": "4f3e6518363eae52d239ff4fae31a1d",
  "firstClassParentId": "09a37cf16ff893d0317df2958901d646",
  "parentPath": "/default/customer",
  "extractorRunId": "4f3e6518363eae52d239ff4fae31a1d##24096",
  "dataType": "tinyint",
  "sourceType": "HIVE",
  "deleted": false,
  "type": "FIELD",
  "internalType": "hv_column"
},
{
  "identity": "90513be165bd53dfe807360180fa21c1",
  "originalName": "first_name",
  "sourceId": "4f3e6518363eae52d239ff4fae31a1d",
  "firstClassParentId": "09a37cf16ff893d0317df2958901d646",
  "parentPath": "/default/customer",
  "extractorRunId": "4f3e6518363eae52d239ff4fae31a1d##24096",
  "dataType": "string",
  "sourceType": "HIVE",
  "deleted": false,
  "type": "FIELD",
  "internalType": "hv_column"
},
{
  "identity": "8edfddee80a38331bf2d64a177c7ed3a",
  "originalName": "last_name",
  "sourceId": "4f3e6518363eae52d239ff4fae31a1d",
  "firstClassParentId": "09a37cf16ff893d0317df2958901d646",
  "parentPath": "/default/customer",
  "extractorRunId": "4f3e6518363eae52d239ff4fae31a1d##24096",
  "dataType": "string",
  "originalDescription": null,
  "sourceType": "HIVE",
  "deleted": false,
  "type": "FIELD",
  "internalType": "hv_column"
}
]
```